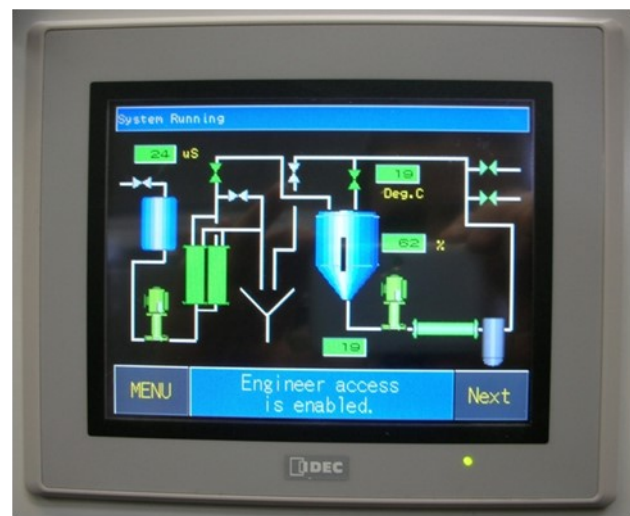


EndoTherm Mini



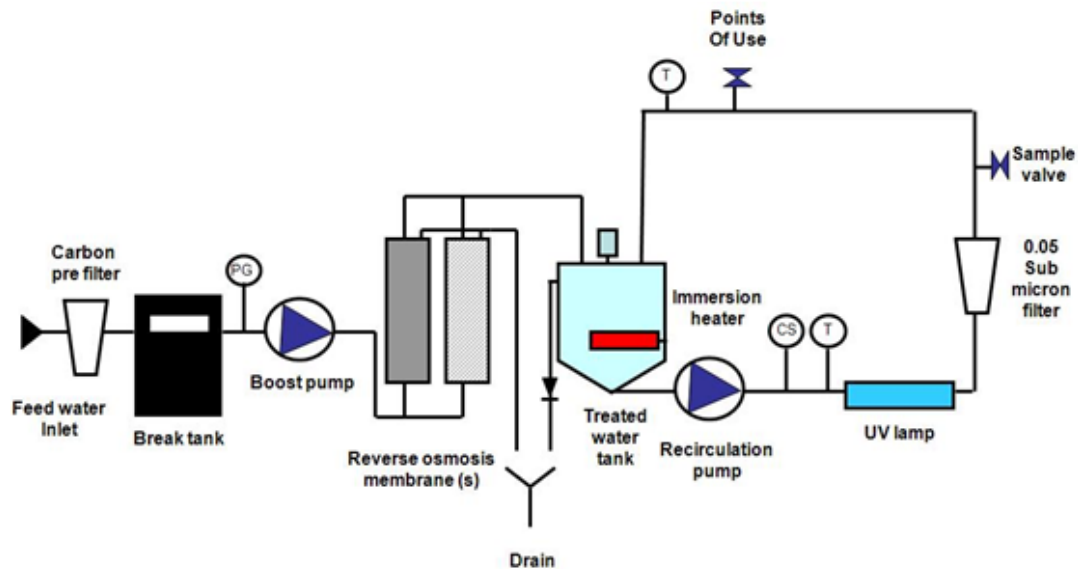
A complete water purification system with thermal sanitisation in a single cabinet

The EndoTherm Mini system will deliver ambient temperature purified water to HTM2030 / CfPP01-06 and EN ISO15883 requirements, and can be programmed for thermal sanitisation to take place outside work hours. Reverse osmosis, ultra violet light and 0.05 micron filtration work together in a recirculating system to achieve and maintain the required water quality.

Benefits

- Ideal for single/multiple AER feed
- Designed to comply with CfPP01-06, HTM2030, C32 and the European Standard EN ISO15883
- Compact and easy to install, the footprint is just 550mm (w) x 600mm (d) x 1,985mm (h)
- Water recirculates at ambient temperature via the UV and UF endotoxin filter to the point(s) of use
- High capacity, 316L stainless steel tank to buffer any peak in demand.
- Distribution loop in stainless steel or PEX
- Thermal disinfection to above 80°C, carried out automatically at night
- Hygienic sample valve to validate and verify product water quality
- Upgradeable outputs
- PLC controller with colour, touch screen HMI for easy system programming
- Automatically logs previous sanitisations and many other operational alarm conditions for peace of mind

System Flow Diagram



Technical Specification

EndoTherm Mini water quality CFPP01-06 compliant

Conductivity	<30 $\mu\text{S/cm}$
Bacteria	<10 cfu/100ml
Endotoxin	<0.25 EU/ml
Particles	<0.05 microns

Feed water Specification

General	Potable water
Total dissolved solids	<1000 mg/l
Hardness	<400 mg/l
Free Chlorine	<0.4 mg/l
Temperature	5 - 25°C
Pressure	2 - 6 bar

Product Specification

Product Specification	120 / 150	240 / 300	350 / 450
*Product production rate @ 15°C	150 l/h	300 l/hr	450 l/hr
Product delivery rate	Up to 60 l/min	Up to 60 l/min	Up to 60 l/min
Recover rate (max)	Up to 70%	Up to 70%	Up to 70%
Dimensions: H x W x D (mm)	1,985 x 550 x 600	1,985 x 550 x 600	1,985 x 550 x 600
Shipping weight (approx)	180 kg	180 kg	180 kg
Inlet connection	3/4" BSP	3/4" BSP	3/4" BSP
Ringmain connections	1" IDF	1" IDF	1" IDF
Drain from RO	12 mm	12 mm	12 mm
Electrical Supply	1ph, 240V, 32A	1ph, 240V, 32A	1ph, 240V, 32A

* Output subject to soft water feed



UK Office:

Envirogen Water Technologies
Unit 14a Bromyard Road Trading Estate
Bromyard Road, Ledbury
Herefordshire HR8 1NS
Tel: +44 (0) 1531 636328
E: info@envirogen.com
www.envirogen.com



Italian Office:

Fluxa Filtri S.p.A
Viale De GASPERI,88/B
20017, Mazzo di Rho
Milano
Tel: +39 (0)2 93959.1
E: info@fluxafiltri.com
www.fluxafiltri.com



USA Office:

Envirogen Technologies Inc
PO Box 5419
Kingwood, TX 7735-5419
Tel: +1 877.312.8950
E: info@envirogen.com
www.envirogen.com

