

FH Series Multi-Cartridge Filter Housings

Multi-cartridge “FH” series housings for small and medium flow rates

- Quick release V-Clamp closure
- AISI-316/L stainless steel construction as standard
- The V-Clamp closure is suitable to handle only non-hazardous liquids Group 2 in accordance with P.E.D. Directive
- The “FH” series accommodates double open end (DOE) and single open end (SOE) cartridges ranging from 20”, 30”, 40” length. Range accommodates 3 round, 5 round, 6 round & 9 round with a cartridge capacity of 3 to 36 cartridges of 10” length
- Available to accommodate flow rates up to 54 m³/h

Applications

- | | |
|--|---|
| <ul style="list-style-type: none"> • Potable water • Chemicals • Industrial processes • Process water • Edible oils | <ul style="list-style-type: none"> • Coatings, paints, inks & resins • Lubricants • Detergents • Coolants • Cutting oils |
|--|---|

Standard Features

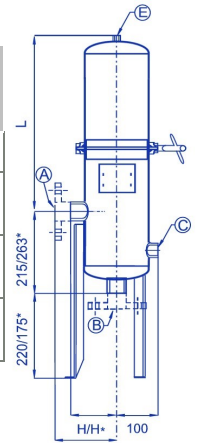
- Chemical etch label
- Pickle finish
- Gasket material – EPDM

Options

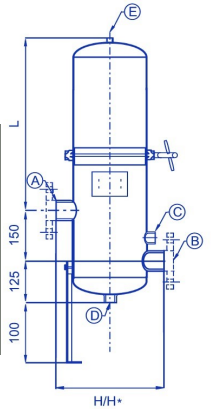
- PED / ATEX classification
- Alternative Inlet/Outlet orientation
- Different gasket material
- Alternative connection types for the In-and Outlet



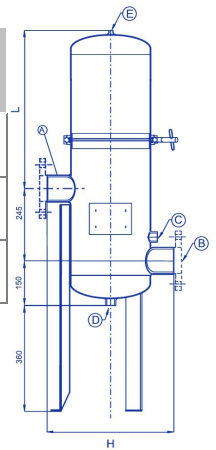
	SERIES	N° CARTRIDGES	MAX. OPERATING PRESSURE	CONNECTIONS			DIMENSIONS			WEIGHT Kg	FLOW RATE** Lts/h
				A-B	C	E	L	H	H*		
"FH" SERIES 3 3÷12 CARTRIDGES	FHSS310	3 x h. 10"	10 bar @ 60°C	1.½" BSPM	¾" BSPF	¼" BSPF	243	120	145	15	4500
	FHSS320	3 x h. 20" (6 x h. 10")					515			17,5	9000
	FHSS330	3 x h. 30" (9 x h. 10")					778			19,5	13500
	FHSS340	3 x h. 40" (12 x h. 10")					1045			21,5	18000



	SERIES	N° CARTRIDGES	MAX. OPERATING PRESSURE	CONNECTIONS			DIMENSIONS			WEIGHT Kg	FLOW RATE** Lts/h
				A-B	C	E	L	H	H*		
"FH" SERIES 5 5÷20 CARTRIDGES	FHSS510	5 x h. 10"	8 bar @ 60°C	2" BSPM	¾" BSPF	¼" BSPF	275	320	380	15	7500
	FHSS520	5 x h. 20" (10 x h. 10")					547			18	15000
	FHSS530	5 x h. 30" (15 x h. 10")					812			21,5	22500
	FHSS540	5 x h. 40" (20 x h. 10")					1065			25	30000



	SERIES	N° CARTRIDGES	MAX. OPERATING PRESSURE	CONNECTIONS			DIMENSIONS			WEIGHT Kg	FLOW RATE** Lts/h
				A-B	C	E	L	H	H*		
"FH" SERIES 9 9÷36 CARTRIDGES	FHSS920	9 x h. 20" (18 x h. 10")	8 bar @ 60°C	3" BSPM	¾" BSPF	¼" BSPF	566	430	475	30	27000
	FHSS930	9 x h. 30" (27 x h. 10")					830			35	40500
	FHSS940	9 x h. 40" (36 x h. 10")					1095			40	54000



Available with connections different from those above mentioned.

H* it referred to flanged versions.

In case of applications where EC stamp, in accordance to the requirements of P.E.D. Directive, is required see multi-cartridges filters "M/T" series leaflet 69.

FH Series Ordering Guide

Model	Material of Construction	Cartridges N° Length		Inlet/Outlet size	Connection Type	Connection Orientation	Special
FH	SS-AISI 316L	3	10"	3 round – 1.5"	BSPF	Z style	
		5	20"	5 round – 2"	BSPF	Z style	
		6	30"	6 round - 2"	BSPF	Z style	
		9	40"	9 round – 3"	BSPF	Z style	

Ordering Guide Example: FH-SS-5-30-5-BSPF Z

European Manufacturing, Sales & Service
 Envirogen Group
 Unit 9, Wimsey Way, Alfreton Trading Estate,
 Alfreton, Derbyshire DE55 4LS,
 United Kingdom
 T: +(0)1531 636328
 E: info@envirogen.com

European Sales & Distribution
 Envirogen Technologies BV
 Penningweg 71, 1507 DG Zaandam,
 The Netherlands
 T: +31 (0)75 204 72 00
 E: nlinfo@envirogen.com